

WEST YORKSHIRE SPINNERS

FREE



THE
CROFT
100% SHETLAND WOOL

WOODSIDE

Fair Isle Festive Blanket by Jenny Watson



THE
CROFT
100% SHETLAND WOOL

Design: Jenny Watson

Technical Editor: Helen Birch

Copyright: The knitted design in this pattern is copyrighted and must not be knitted for resale.

Reproduction of this publication is protected by copyright and sold on the condition that it is used for non-commercial purposes. No part of this pattern may be reproduced for resale.

Follow Us



Join our Facebook Community

 **WYS Crafter's Hub**

Queries

For any pattern queries please visit [wyspinners.com/errata](https://www.wyspinners.com/errata) or contact knitting@wyspinners.com

Disclaimer

Please note that all quantities in this pattern are based on average usage and therefore are approximate. We cannot accept responsibility for the finished items if any yarn other than the one specified is used.

Although every effort has been made to ensure that instructions are correct, West Yorkshire Spinners cannot accept any liabilities.

Owing to photography and printing restrictions, the colour reproduction is matched as closely as possible to the yarn.

WOODSIDE

Fair Isle Festive Blanket

Level ●●●●●

Abbreviations

beg	beginning
cm	centimetre(s)
cont	continue
g	grams
in	inch(es)
K	knit
m1	make one (by picking up loop between last and next stitch and work into the back of this loop)
mm	millimetres
P	purl
patt	pattern
rep	repeat
RS	right side
sl1	slip 1 stitch knitwise
st(s)	stitch(es)
st-st	stocking stitch (1 row knit, 1 row purl) when working in rows
tog	together
WS	wrong side

Yarn

West Yorkshire Spinners – The Croft Aran



A – Stanydale (1011) 6 x 100g



B – Reawick (1010) 4 x 100g



C – Sullom (010) 5 x 100g

Measurements

Blanket

Width x Length (approximately)

cm	140 x 142
in	55 x 56

Equipment

- One pair of 5mm (UK6/US8) knitting needles
- One 5mm (UK6/US8) circular knitting needle 100cm long
- One pair of 4mm (UK8/US6) knitting needles
- One 4mm (UK8/US6) circular knitting needle 100cm long

Picking Up Large Amounts of Stitches for Blanket Border

To make picking up large amounts of sts easier, fold the first edge to be picked up in half and **place marker** at fold. Next, fold the remaining sides in half and **place markers** at each fold. Divide the pick-up sts into four equal stitch counts. Pick up these sts between the **markers**.

Tension

18 sts and 24 rows to 10cm (4in) over stocking stitch pattern using 5mm needles or size required to give correct tension.

If there are less sts to 10cm than the number stated, change to a smaller needle. If there are more sts to 10cm than the number stated, change to a larger needle.

It is essential to work to the stated tension to ensure success.

Working From a Chart

When working from a chart you will read all **RS** rows from right to left and all **WS** rows from left to right.

Fair Isle and Intarsia Techniques

When working with two or three colours at once, the colours not in use should be stranded loosely across the back of colour being used. When stranding the yarn becomes difficult, use a separate ball of yarn for each colour and twist the yarn about to be used around the colour just used to link yarns together on **WS** to avoid a hole.

Blanket

Using 4mm needles or circular needle and A, cast on 284 sts.

Row 1 (RS): P1, K2, *P2, K2, rep from * to last st, P1.

Row 2: K1, *P2, K2, rep from * to last 3 sts, P2, K1.

These 2 rows set rib, work 7 rows more.

Row 10 (WS): Rib 3, rib2tog, (rib 4, rib2tog) 46 times, rib 3. 237 sts.

Change to 5mm needles or circular needle and proceed as follows:

Working rows 1 to 24 in st-st as set on **Chart A**, **at same time** work 44 st rep 5 times.

Working rows 25 to 34 in st-st as set on **Chart B**, **at same time** work 18 st rep 12 times.

Working rows 35 to 64 in st-st as set on **Chart C**, **at same time** work 22 st rep 10 times.

Working rows 65 to 78 in st-st as set on **Chart D**, **at same time** work 12 st rep 19 times.

Working rows 79 to 94 in st-st as set on **Chart E**, **at same time** work 22 st rep 10 times.

Working rows 95 to 100 in st-st as set on **Chart F**, **at same time** work 8 st rep 28 times.

Rows 1 to 100 of **Charts** set patt.

Cont in patt as set (throughout) work 221 rows more, ending with row 21 of **Chart A**.

Break off B and C.

Change to 4mm needles or circular needle and A and proceed as follows:

Next row (WS): P4, m1, (P5, m1) 46 times, P3. 284 sts.

Row 1 (RS): P1, K2, *P2, K2, rep from * to last st, P1.

Row 2: K1, *P2, K2, rep from * to last 3 sts, P2, K1.

These 2 rows set rib, work 7 rows more.

Cast off.

Side Borders (both alike)

With RS facing, using 4mm needles or circular needle and A, pick up and knit 8 sts evenly along purl st of rib, 324 sts evenly along side edge to rib and 8 sts evenly along purl st of rib. 340 sts.

Row 1 (WS): Sl1, P2, *K2, P2, rep from * to last st, K1.

Row 2: Sl1, *K2, P2, rep from * to last 3 sts, K2, P1.

These 2 rows set rib, work 9 rows more.

Cast off in rib.

Finishing

Pin your Blanket out to size stated in the pattern, cover with a damp cloth and leave to dry.



When working from a chart you will read all **RS** rows from right to left and all **WS** rows from left to right.

Chart A

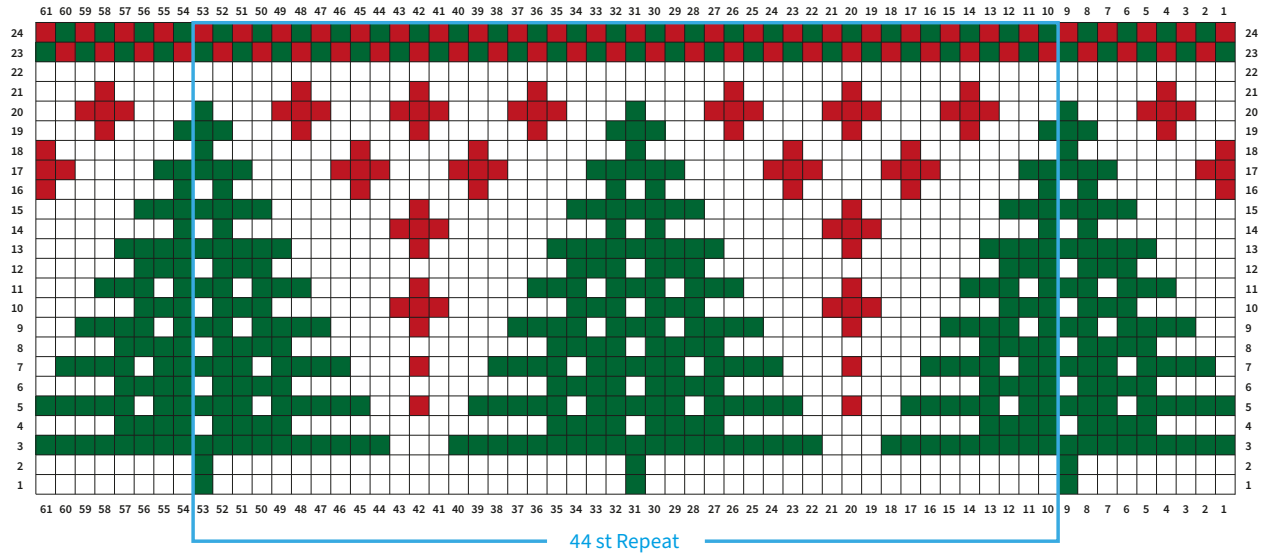
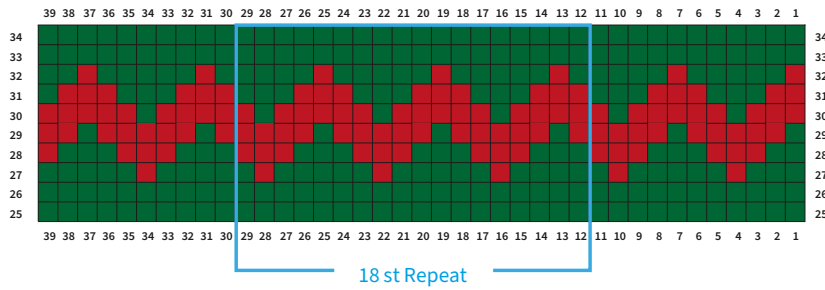


Chart B



Key

RS: Knit
WS: Purl

- Colour A
- Colour B
- Colour C

- Chart A – Rep these 44 sts 5 times
- Chart B – Rep these 18 sts 12 times

When working from a chart you will read all **RS** rows from right to left and all **WS** rows from left to right.

Chart C

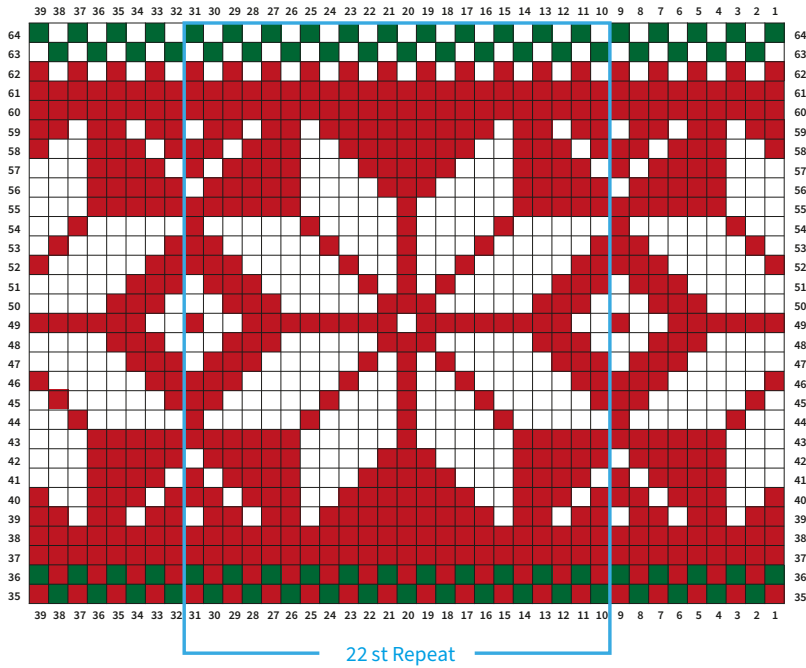


Chart D

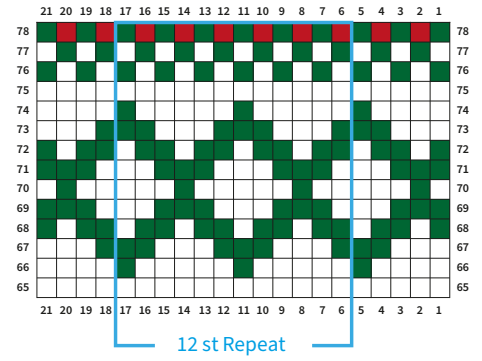


Chart E

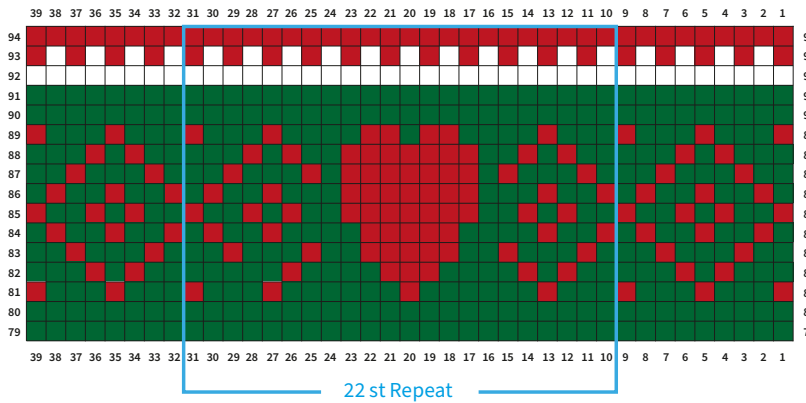
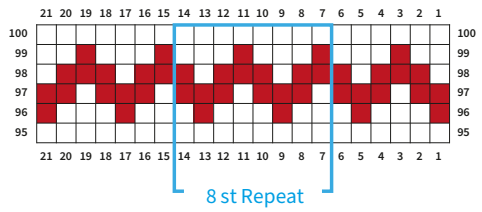


Chart F



Key

RS: Knit
WS: Purl

- Colour A
- Colour B
- Colour C

- Chart C** – Rep these 22 sts 10 times
- Chart D** – Rep these 12 sts 19 times
- Chart E** – Rep these 22 sts 10 times
- Chart F** – Rep these 8 sts 28 times



WEST YORKSHIRE SPINNERS

DFP0024 / WYS1000155



2 Airedale Park, Royd Ings Avenue, Keighley, West Yorkshire BD21 4DG
+44 (0)1535 664500 sales@wyspinners.com wyspinners.com